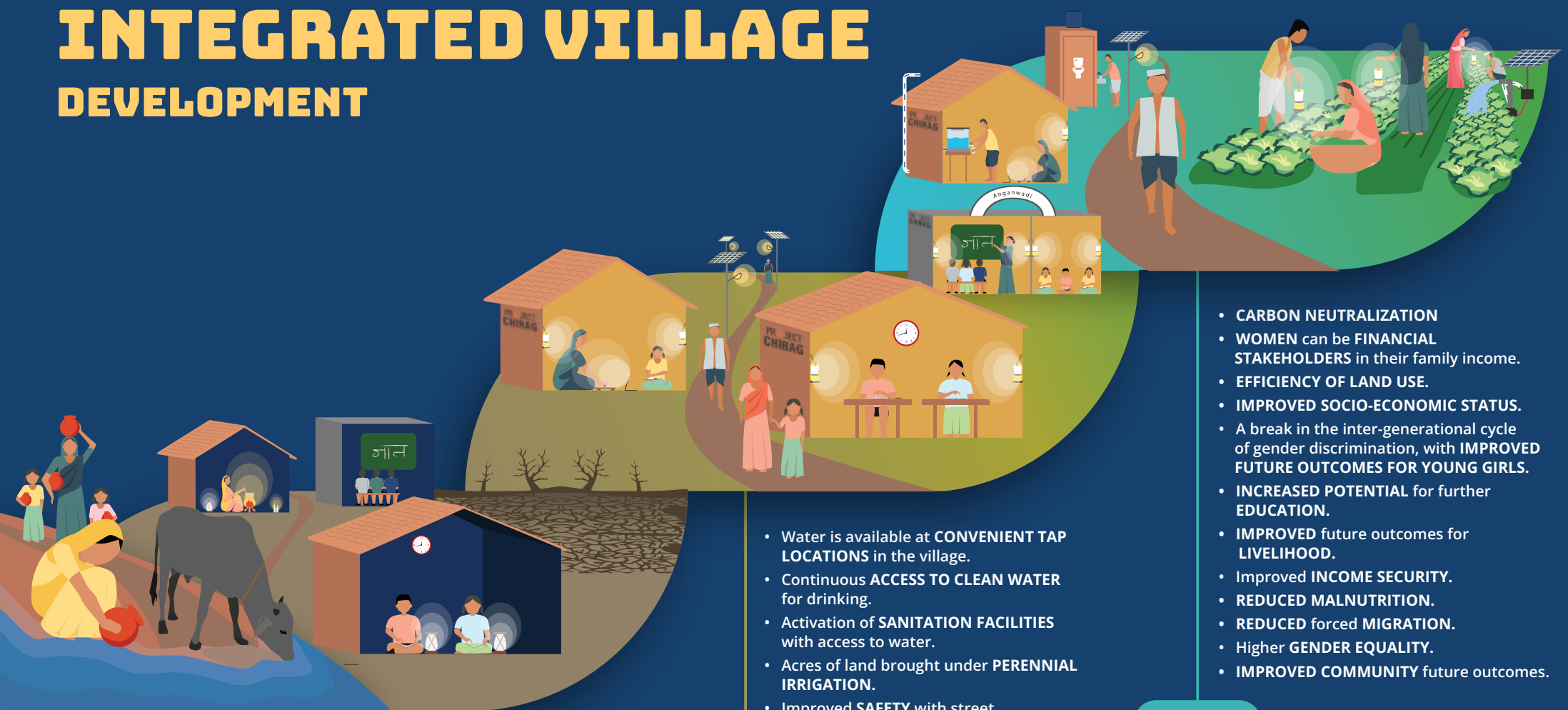


INTEGRATED VILLAGE DEVELOPMENT



CHALLENGES

- **POVERTY**
- **POOR HEALTH** with lack of water
- **GENDER DISPARITY**
- **POOR** functional **LITERACY**
- Poor outcomes for girl child
- **POOR HEALTH** and hygiene
- **LACK OF FOOD SECURITY**
- **LACK OF SOCIAL SECURITY**
- Forced **MIGRATION**

OUTPUTS

- Water is available at **CONVENIENT TAP LOCATIONS** in the village.
- Continuous **ACCESS TO CLEAN WATER** for drinking.
- Activation of **SANITATION FACILITIES** with access to water.
- Acres of land brought under **PERENNIAL IRRIGATION**.
- Improved **SAFETY** with street **ELECTRIFICATION**.
- **INCREASED PRODUCTIVE HOURS** inside and outside the home.
- **IMPROVED GIRL'S ATTENDANCE** in school.
- **REDUCED** school **DROP-OUT** rates.
- **INCREASED CULTIVATION** for captive and commercial consumption.
- Improvement in **NUTRITION PATTERN**.

IMPACT

- **CARBON NEUTRALIZATION**
- **WOMEN** can be **FINANCIAL STAKEHOLDERS** in their family income.
- **EFFICIENCY OF LAND USE**.
- **IMPROVED SOCIO-ECONOMIC STATUS**.
- A break in the inter-generational cycle of gender discrimination, with **IMPROVED FUTURE OUTCOMES FOR YOUNG GIRLS**.
- **INCREASED POTENTIAL** for further **EDUCATION**.
- **IMPROVED** future outcomes for **LIVELIHOOD**.
- Improved **INCOME SECURITY**.
- **REDUCED MALNUTRITION**.
- **REDUCED** forced **MIGRATION**.
- Higher **GENDER EQUALITY**.
- **IMPROVED COMMUNITY** future outcomes.