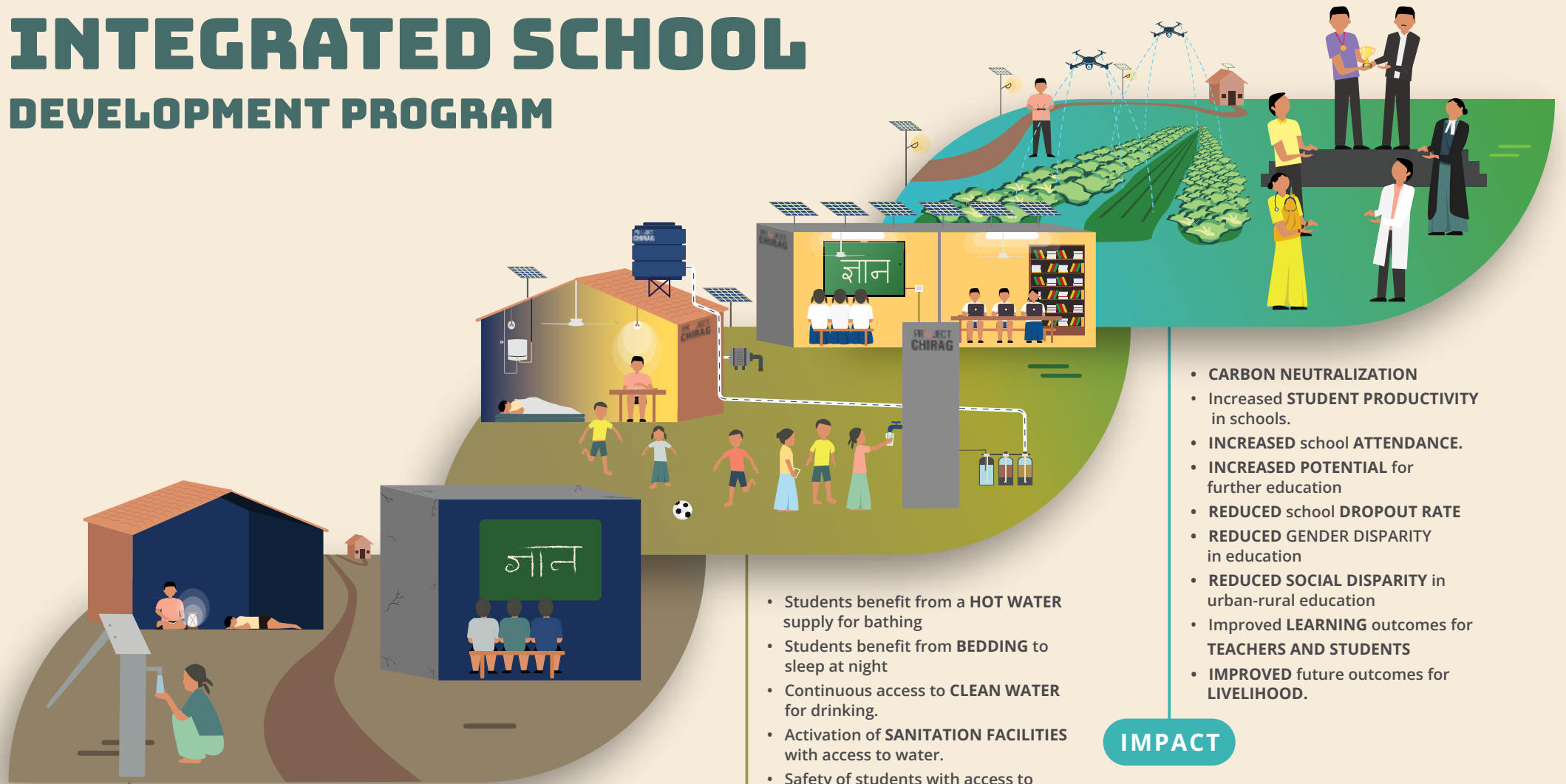


INTEGRATED SCHOOL DEVELOPMENT PROGRAM



- **POOR HEALTH** and hygiene indicators
- **POOR ATTENDANCE** in school because of **WATERBORNE DISEASES**
- **LACK OF DRINKING WATER**
- **LACK OF** access to continuous/affordable/viable **ELECTRIFICATION**
- **POOR INFRASTRUCTURE** to support functional literacy

CHALLENGES

- Students benefit from a **HOT WATER** supply for bathing
- Students benefit from **BEDDING** to sleep at night
- Continuous access to **CLEAN WATER** for drinking.
- Activation of **SANITATION FACILITIES** with access to water.
- Safety of students with access to **SUSTAINABLE ELECTRIFICATION.**
- Access to **DIGITAL EDUCATION** with access to electricity.
- Improved engagement with access to **HOLISTIC PROGRAMS.**
- Improved delivery of education with access to **IMPROVED INFRASTRUCTURE.**

OUTPUTS

- **CARBON NEUTRALIZATION**
- Increased **STUDENT PRODUCTIVITY** in schools.
- **INCREASED** school **ATTENDANCE.**
- **INCREASED POTENTIAL** for further education
- **REDUCED** school **DROPOUT RATE**
- **REDUCED** GENDER **DISPARITY** in education
- **REDUCED SOCIAL DISPARITY** in urban-rural education
- Improved **LEARNING** outcomes for **TEACHERS AND STUDENTS**
- **IMPROVED** future outcomes for **LIVELIHOOD.**

IMPACT

